



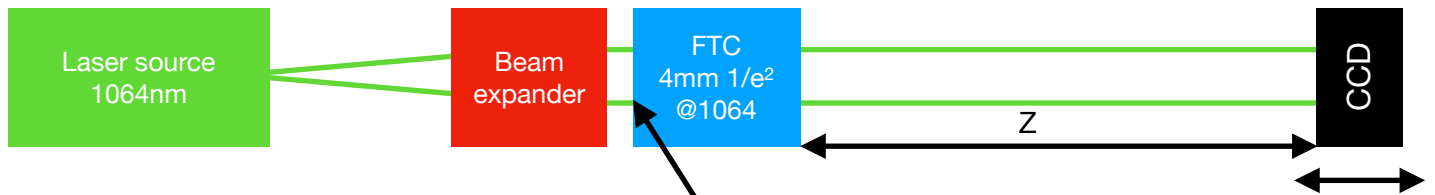
FTC
Flat Top Converter
With expander
REPORT

2022-06-14

Setup parameters	3
Setup scheme:	3
Laser parameters:	3
Flat top converter parameters:	3
FLAT TOP measurements:	4
Only FTC (no expander after FTC)	4
FTC with beam expander (2X)	5
FTC with beam expander (3X)	6
Focusing Flat Top beam (with 3X expander)	7

Setup parameters

Setup scheme:

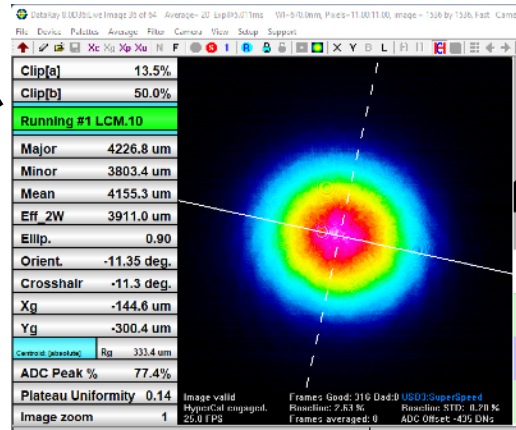


Laser parameters:

Wavelength 1064nm
Beam diameter X 4.2mm, Y 3.8mm 1/e²

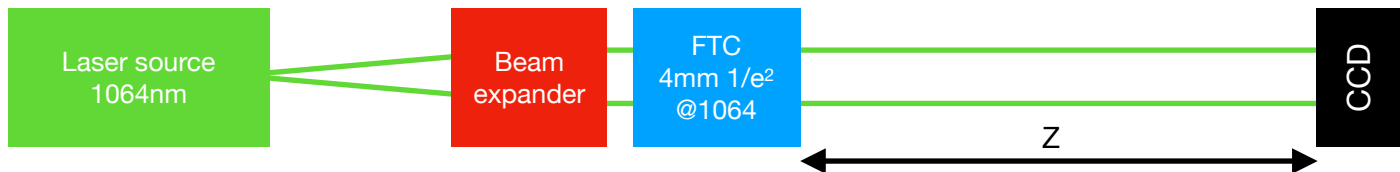
Flat top converter parameters:

Wavelength 1064nm
Beam diameter 4mm 1/e²

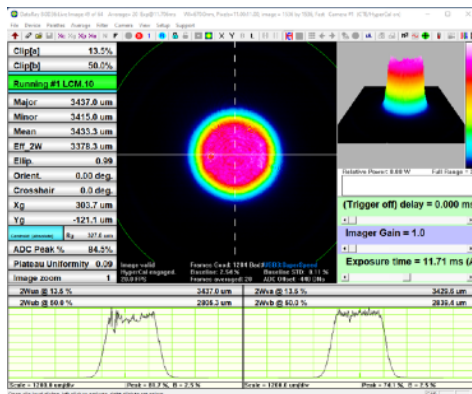


FLAT TOP measurements:

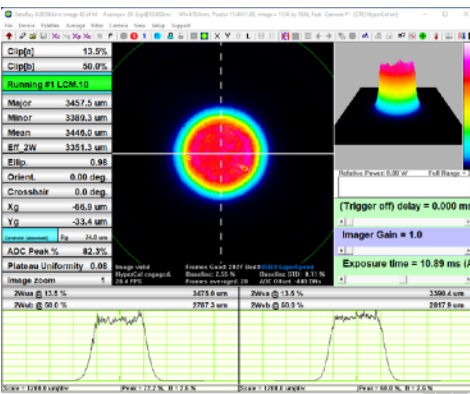
Only FTC (no expander after FTC)



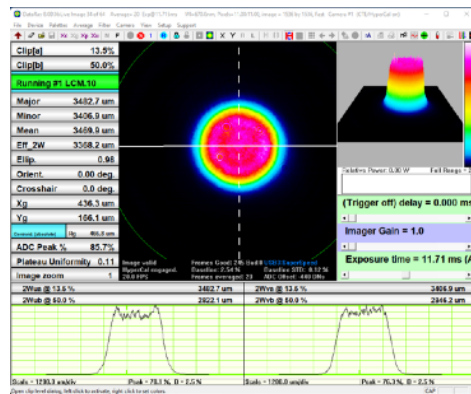
Z=0cm



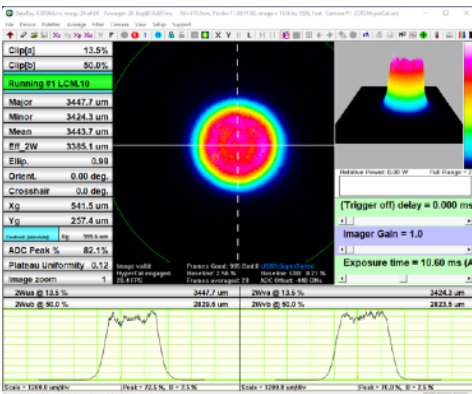
Z=10cm



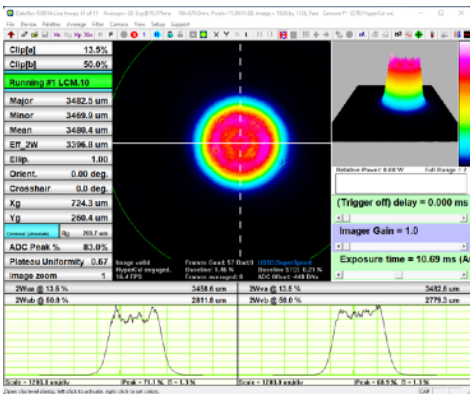
Z=20cm



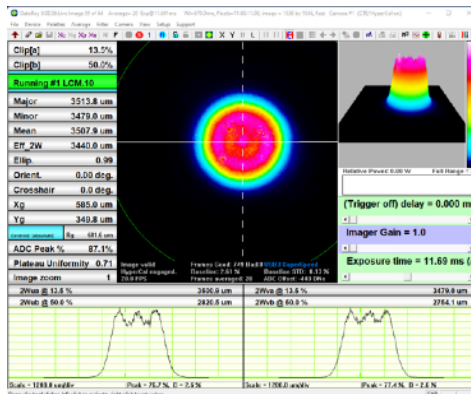
Z=30cm



Z=40cm

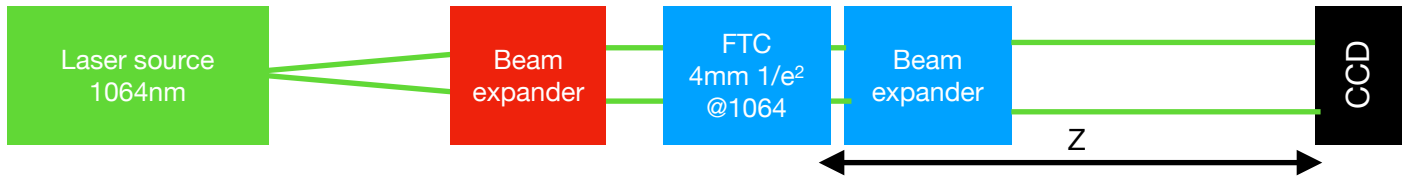


Z=50cm

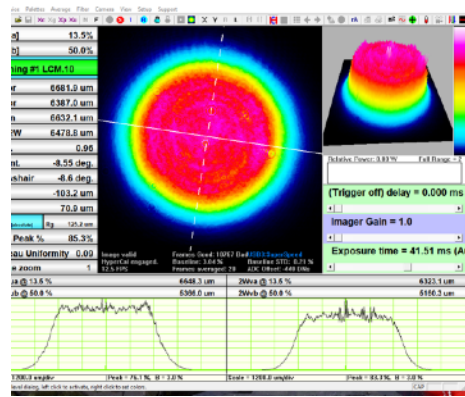


Z - distance between Flat Top Converter and CMOS camera

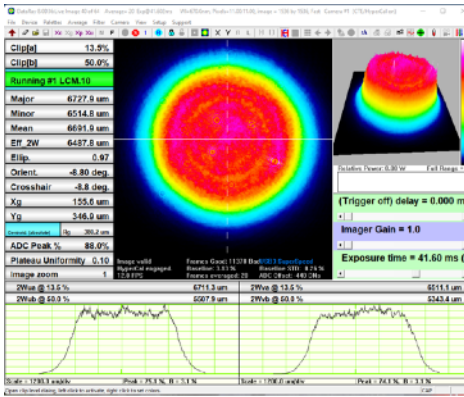
FTC with beam expander (2X)



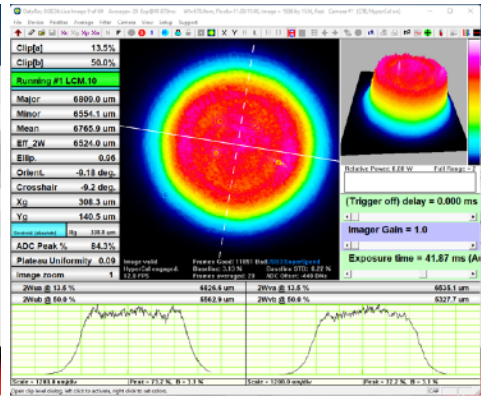
Z=10cm



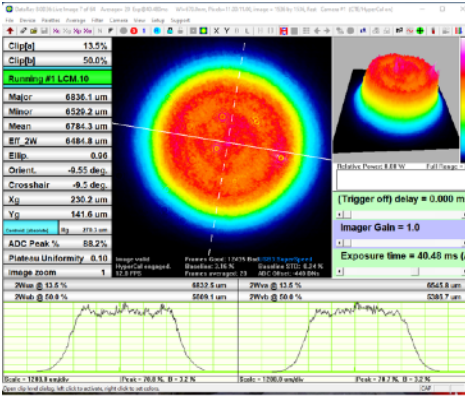
Z=20cm



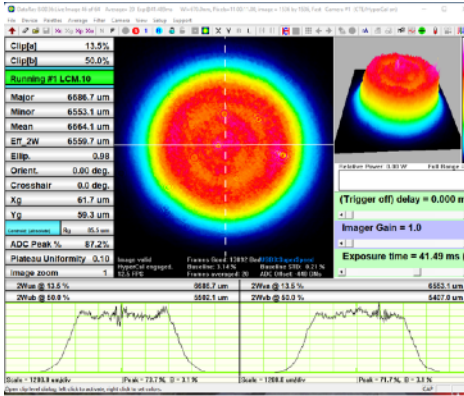
Z=30cm



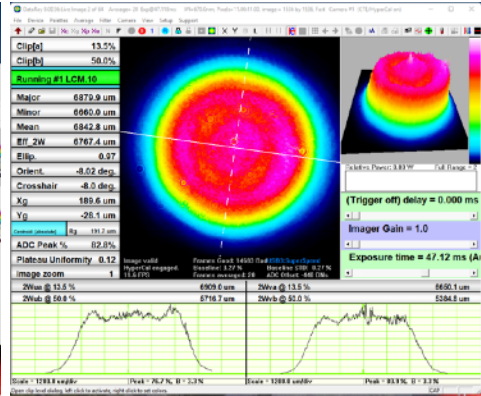
Z=40cm



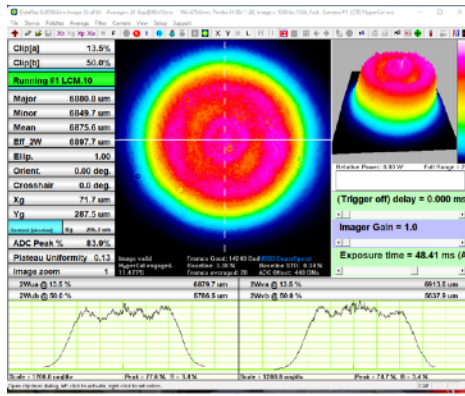
Z=50cm



Z=75cm

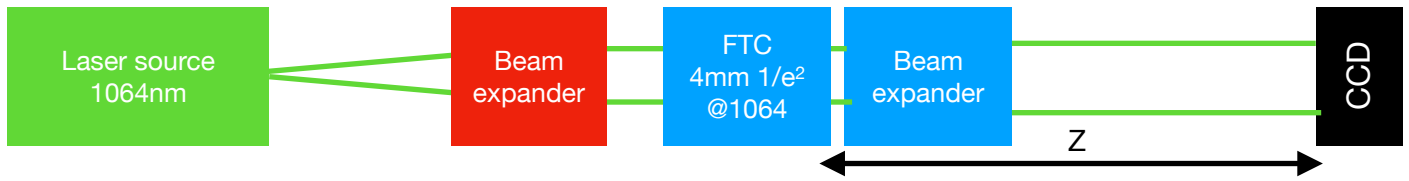


Z=100cm

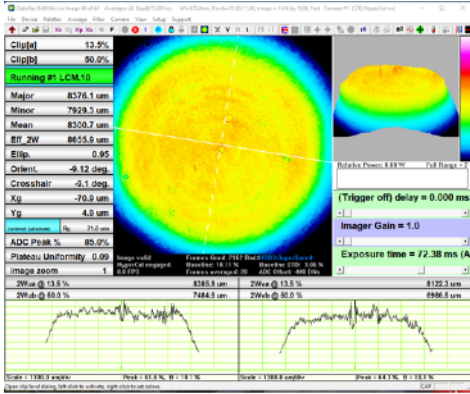


Z - distance between Flat Top Converter and CMOS camera

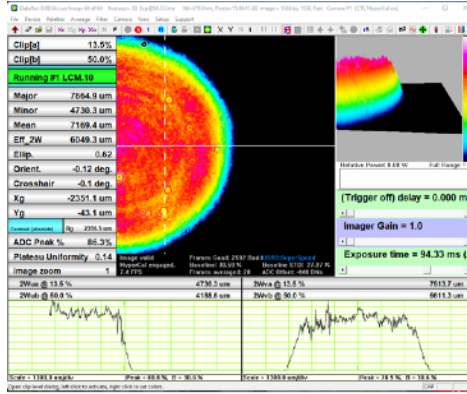
FTC with beam expander (3X)



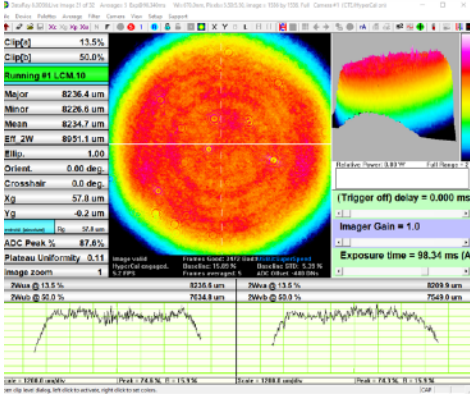
Z=10cm



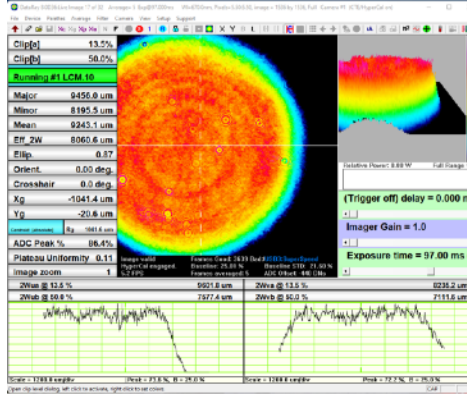
Z=10cm (edge)



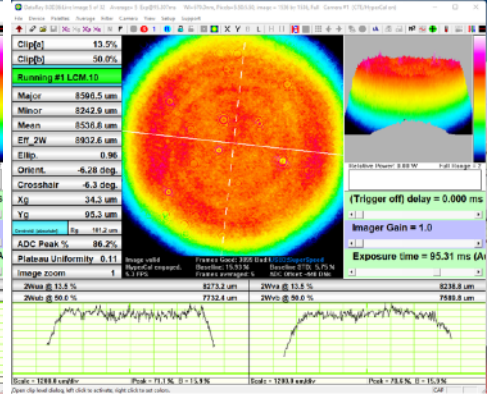
Z=30cm



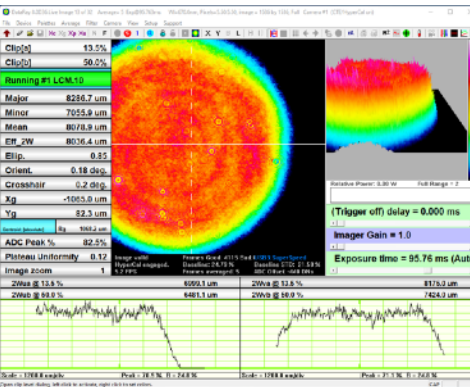
Z=30cm (edge)



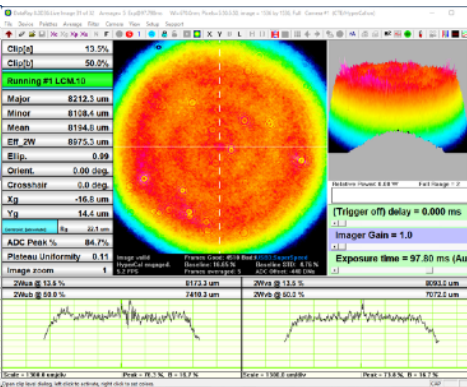
Z=50cm



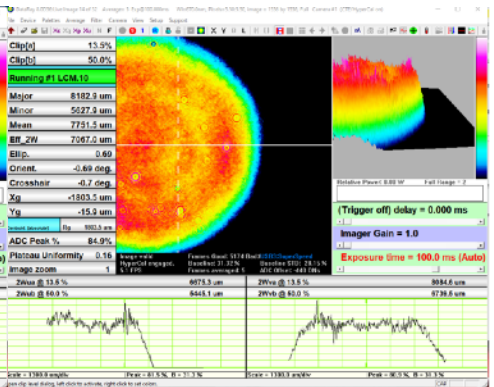
Z=50cm (edge)



Z=100cm



Z=100cm (edge)



Z - distance between Flat Top Converter and CMOS camera

Focusing Flat Top beam (with 3X expander)

