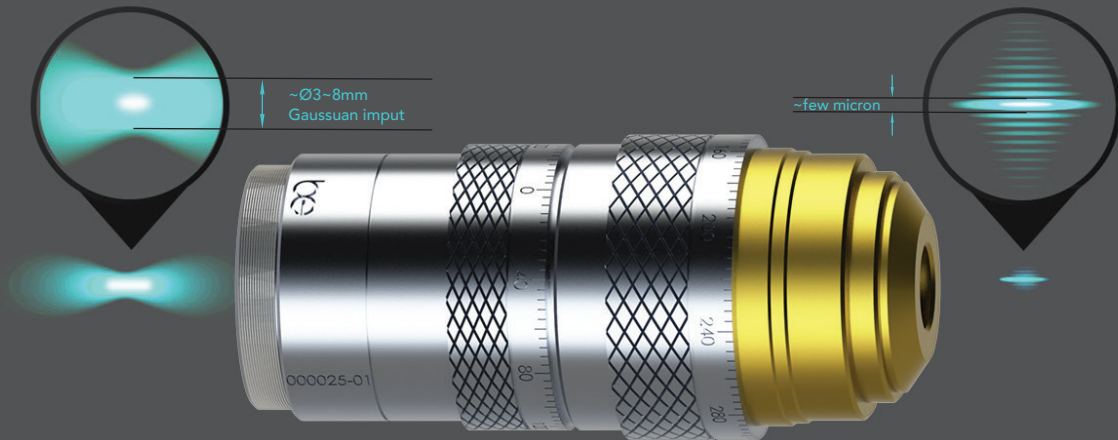


Bessel beam shaper

be DATA SHEET



Specifications:

Wavelength	343; 515; 1030 nm
Incoming beam diameter	3~8 mm
Outgoing beam (Bessel peak) diameter	3 μ m
Outgoing beam (Bessel peak) length	450 μ m
Number of lenses	3
Transmittance	>98%
LIDT	>25 J/cm ² @ 1064 nm; 10 ns; 100 Hz >3.6 J/cm ² @ 1064 nm; 10 ps; 10 kHz
Mounting	SM1 thread at input and output

Notes

- Gaussian beam in - Bessel beam out
- Negative Bessel-Gauss zone
- Positive or double Bessel-Gauss zones upon request
- Near-ideal Bessel-Gauss beam form
- Length of Bessel zone depends on input beam diameter
- Mounts into standard cage systems
- Easy to adjust in optical system
- Gauss-Bessel conversion efficiency ~95%
- Requires circularly polarized input beam

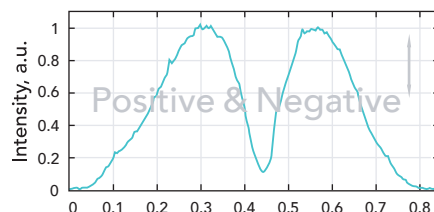
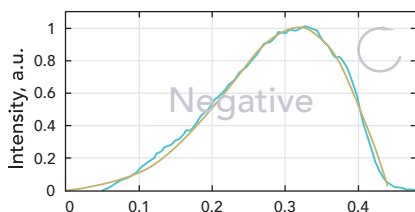
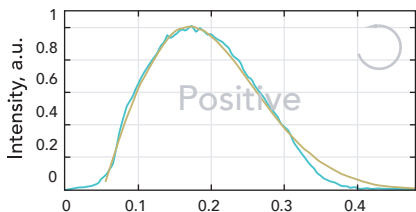
Tel.: +3706 851 9989
E-mail.: info@beamera.eu
Web: www.beamera.eu

Beamera, UAB
Sauletekio al. 15a-218
Vilnius, Lithuania

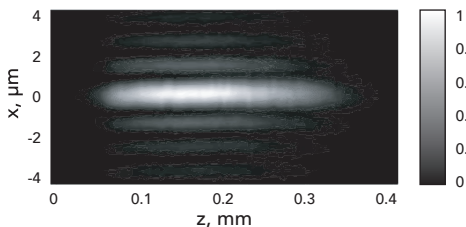
Bessel beam shaper

3 types of Bessel-Gauss zones - Positive or Negative or Both depending on input polarization

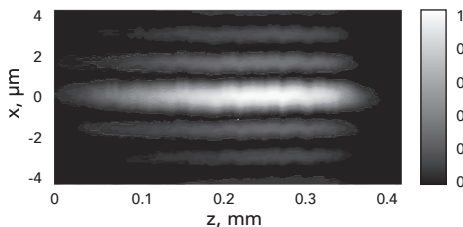
Yellow - simulated curve Green - measurement



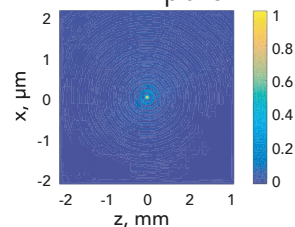
Intensity distribution in XZ plane



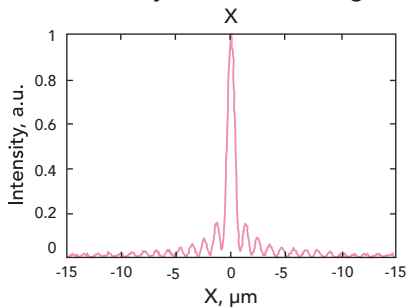
Intensity distribution in XZ plane



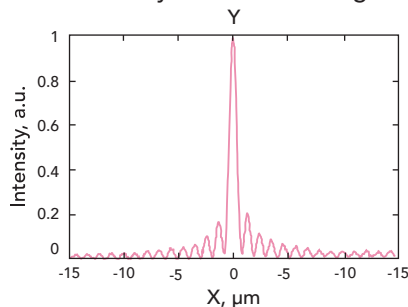
Intensity distribution in XY plane



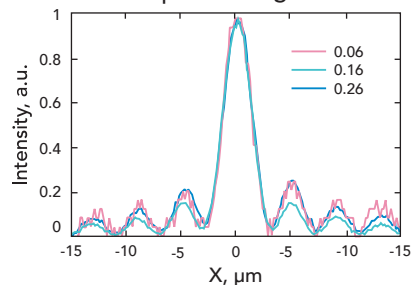
Intensity distribution along X



Intensity distribution along Y



Intensity along Y at different plane along Z



Tel.: +370 851 9989
E-mail: info@beamera.eu
Web: www.beamera.eu

Beamera, UAB
Sauletekio al. 15a-218
Vilnius, Lithuania